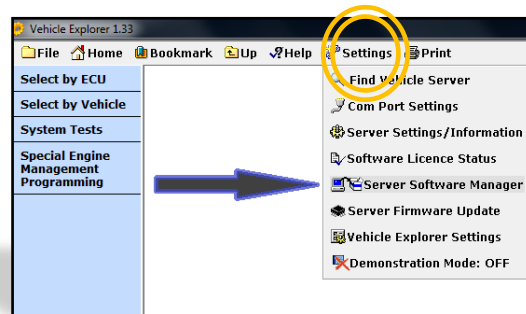


# Vehicle Explorer V1.33: Server Software Manager User Guide

This is a short guide to instruct users on the purpose and features of the server software manager found under the *Settings* section of Vehicle Explorer. The purpose of this utility is to transfer different software control modules, such as “SM031” which gives access to the Lucas 10-AS alarm, from the Vehicle Explorer Software on your PC/Laptop to the on-board memory of your vehicle server.

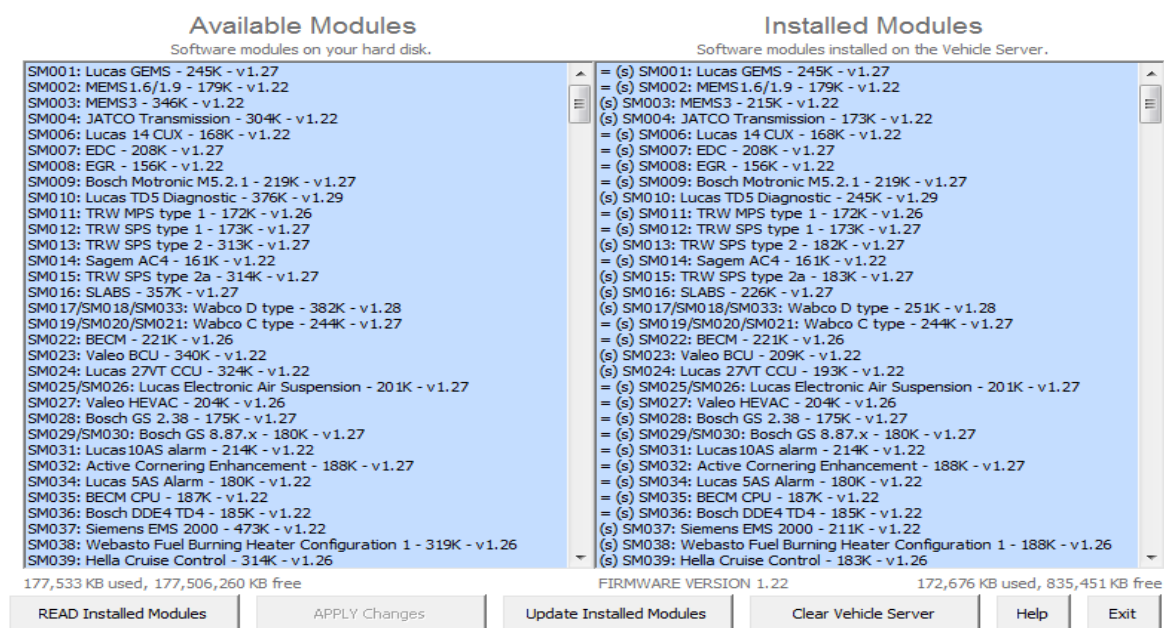
This way, your server can carry the actual module access software itself, allowing it to be as accessible through the MSV-2 Extreme server in stand-alone mode and also gives the user the option to use a single server on multiple computers by simply installing the Vehicle Explorer software on them, but not needing anything else.

To locate the Server Software Module Manager, see the image below:



## The Server Software Manager Screen

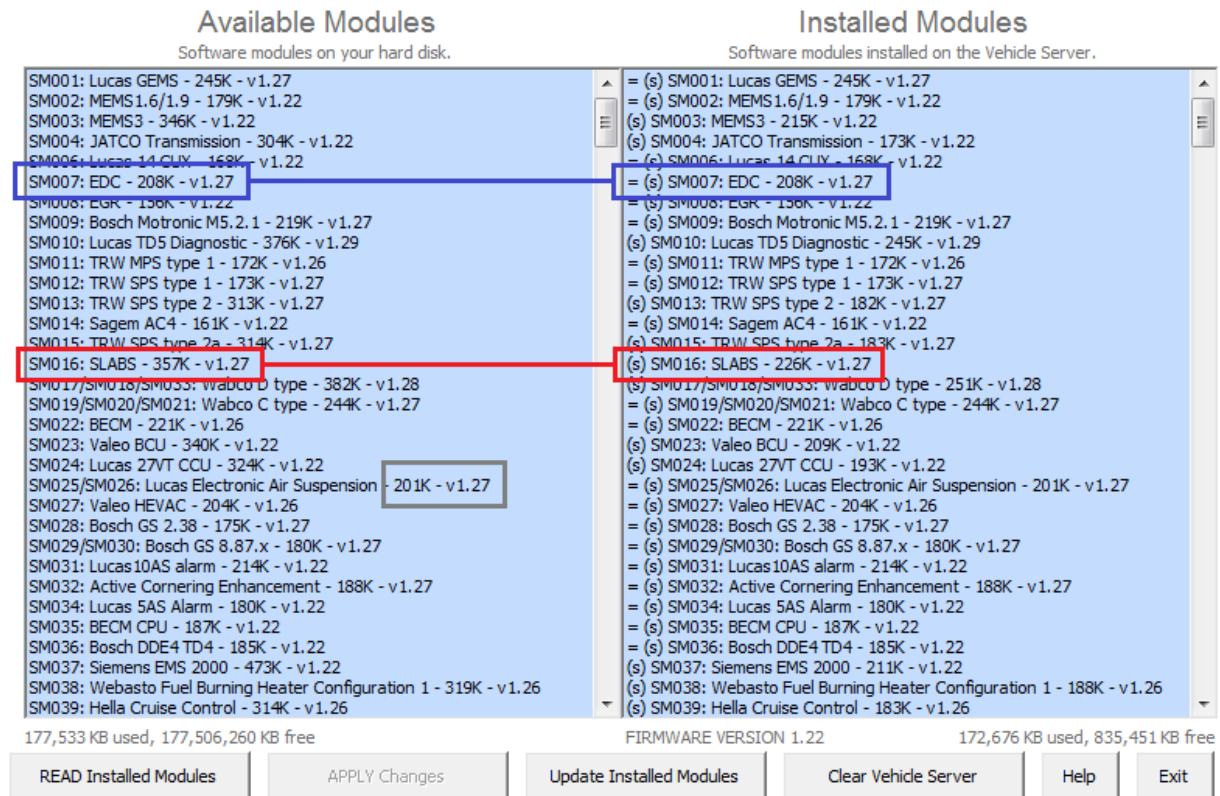
Welcome to the on-screen display of the Server Software Manager, this is what you will see when you select it from the Settings menu (Please note: the right-hand list will vary from this image)



Here the software provides two window lists, the list to the left gives the current modules available from your PC/Laptops Vehicle Explorer Software, the list to the right are the currently installed modules on-board your server.

Please note, this application is software based, and so, does not change whether you are using an older Rovacom Lite or a modern MSV-2 server.

The list of Server modules shown on the right hand side also gives the user an intuitive display of each modules individual status, as outlined in the image below:



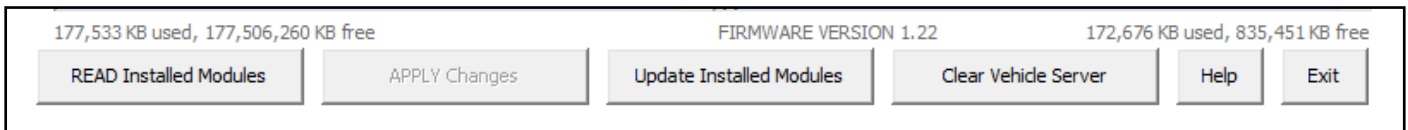
The information from the above screen shot is explained below:

- ▶ **Blue outline:** This is a comparison between two modules that are supposed to be the same. Once a module has been updated to the latest version (taken from the PC/Laptop) then you should see a symbol =(s) next to the module shown in the right-hand list. This symbol means that the module on the server and the module on the PC/Laptop are indeed identical versions.
- ▶ **Red outline:** This example shows what will be displayed when you have two modules that are the same by name, for example “SM016: SLABS”, on both the PC/Laptop and the Server, yet the two are not the same version of that module. If you have a module with only the (s) symbol, you can update that module to match the latest version on your PC/Laptop.
- ▶ **Grey outline:** This is an example of the version number, such as “V1.27”, and the size of that module, for example “201K”, which is Kilobytes. This information is useful for helping you to further ascertain which modules are up to date and match that of the Vehicle explorer software and which modules do not match and therefore need updating.

## Server Software Manager: Controls and Functionality

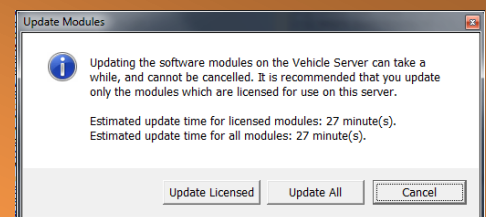
Your toolbar is located at the bottom of the screen below the two module lists:

(Above these function buttons, you are also shown your Server Firmware Version as well as the memory status)



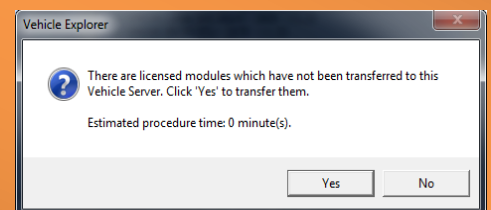
- ▶ **READ Installed Modules (Refresh Module list):** This button is used to read all of the currently installed modules from the server. When used, it will recompile and display the currently installed modules on your server. This button can also be used to refresh the SSM program (Should the program experience difficulties or need refreshing, all of the other function buttons will become “greyed out” and the user will be prompted to press the *READ installed modules* button as a program refresh tool).
- ▶ **APPLY Changes:** This button will apply any changes made since the SSM was last run or since the last time the *Apply changes* button was pressed. It will remain greyed out until an applicable change has been made.
- ▶ **Update Installed Modules:** Pressing this button will give you two options as follows:

1. **Update Licensed:** The program will detect which vehicle modules you have licenses (TUP codes) for and update only those modules. This is so time isn't wasted updating modules that you don't actually use or need.
2. **Update All:** This button will update all of the modules on Your server, whether they are licensed for use or not.



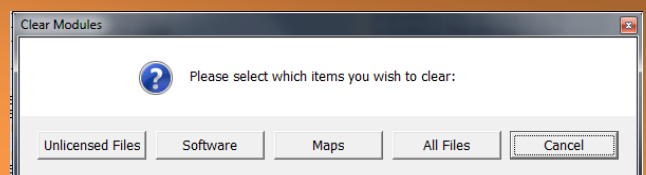
- ❖ **Pending licensed modules option:** If you select the *Update Installed Modules* function and you are then presented with the above three options to *Update Licensed*, *Update All* or *Cancel*, if you press *Update Licensed*, you may be presented with this window:

This will offer you an automated facility to transfer over any modules that you have licensed but do not yet have installed on you server. If you press *No*, the SSM will only update the out of date modules already on the server.



- ▶ **Clear Vehicle Server:** For situations where the user may end up with several modules in the list that are not needed, you will be presented with these options:

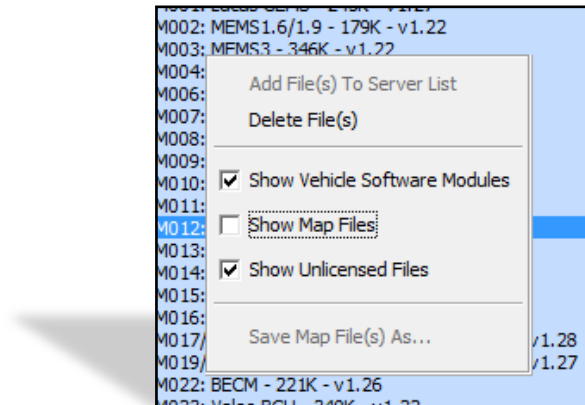
1. **Unlicensed Files:** This will delete all modules from the server list that do not have licenses.
2. **Software:** This will remove all of the modules from the server, whether they are licensed or not.
3. **Maps:** This will remove all of the .MAP files from the server.
4. **All Files:** This will clear the .MAP files aswell as all of the Modules (licensed or unlicensed) from the server.



- ▶ **Help:** This will open a new program window taking you directly to the relevant help section. From there you can also navigate the entire help system for the whole of Vehicle Explorer.
- ▶ **Exit:** This will close the SSM Program window and any unsaved or unapplied changes will be lost.

### Using the Module List Filters

There are a few filter options provided to allow the user to streamline their module lists for easy navigation and better organisation. They can be accessed by right-clicking on either the left or right module lists. You will then be presented with a small options box like this:



The options available here perform the following functions:

- ▶ **Add files(s) to Server List:** This option will become available if you right-click on a module from the left hand side PC/Laptop module list. This option only goes one way, from the VE Software to the Server.
- ▶ **Delete File(s):** This option will only become selectable when you right-click on a module from the right hand side Server Module list.
- ▶ **Checkbox option Filters:** (Please note: These filters affect both the VE and Server lists)

1. **Show Vehicle Software Modules:** For including or not including the SM Modules in the lists.
2. **Show Map Files:** For including or not including the .MAP files in the lists.
3. **Show Unlicensed Files:** This will include or exclude Modules that you do not have licenses for on your Server.

- ▶ **Save Map Files(s) As:** This function allows you to highlight a .MAP file from the Server List and save it to your PC/Laptop.